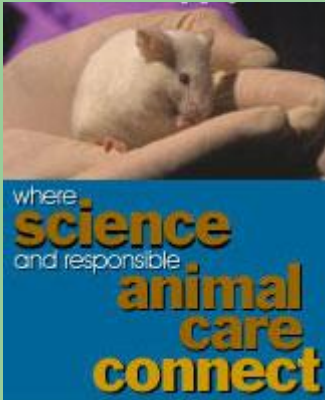


The AAALAC Site Visit



What to expect

UNC-CH will host an AAALACi site visit May 30 – June 2, 2017

- 4-member site visit team
- Evaluating UNC-CH animal care program for 4 days
- Lead AAALACi Council Member – Dr. Chris King
- Other members of team: Drs. John Norton, Valerie Bergdall, Mary Robinson

The AAALAC Site Visit

- So why are we accredited, anyway?
- Isn't it a lot of work to do every three years?



Association for Assessment and Accreditation
of Laboratory Animal Care International

- Demonstrates the University's commitment to a quality animal research program
- Provides a peer review (every 3 years)
- Places the University in good standing with NIH and other granting agencies
- Helps improve our program
- Voluntary

AAALAC International Accreditation

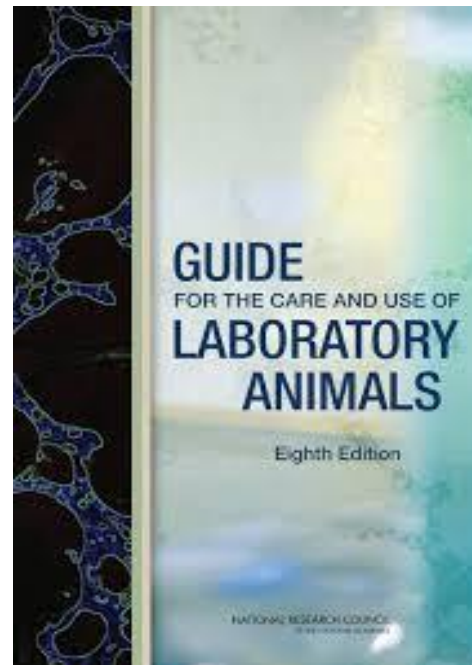
- The UNC-CH School of Medicine animal program was accredited in 1973
- The remaining campus animal program merged with the SOM and the entire UNC-CH program was accredited in 1990

What Are The Site Visitors Looking For?

- A site visit evaluates:
 - Institutional commitment (resources)
 - IACUC function
 - Husbandry programs
 - Veterinary care programs
 - Occupational health and safety programs
 - Record keeping
 - Facilities (DLAM and PI Satellites)
 - PI laboratories where animals are taken

What Standards Are Used to Evaluate?

- The “Guide”



What Do Site Visitors Do While They Are Here?

- They reviewed the UNC-CH “Program Description” before arriving
- Meet with IO, IACUC, OACU, DLAM, EHS, Researchers
- Tour all animal facilities and satellites
- Tour many laboratories where animals are used
- Evaluate supporting documentation of program operation (i.e. records)

What Should I Do To Prepare?

- Continue normal laboratory activities
- Review current protocols with amendments
- Contact OACU or DLAM with questions
- Be prepared to answer the following questions

CORRECTLY

Likely Questions



- Describe the animal procedures conducted in the lab.
- Are the animal procedures performed in the lab described in the approved protocol?
- Has everyone in the lab read the protocol and amendments?
- What kinds of training did you receive regarding the animal procedures you're conducting (by the PI, IACUC/OACU, DLAM)?

Likely Questions



- **Survival Surgery**

- Is the area dedicated during surgical procedure, free of clutter, and sanitizable?
- Describe aseptic technique (animal prep, surgeon prep, instrument prep – sterile gloves, surgical area prep)

Likely Questions



- **Survival Surgery**

- Analgesic agents?

- in date & pharmaceutical grade
- administration schedule & records documenting use
- administered according to frequency in protocol

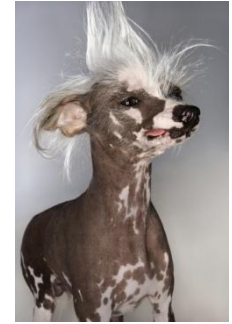
- Post-operative monitoring

- animals monitored until awake
- records documenting monitoring according to approved protocol

Likely Questions

- **Surgery – survival and non-survival**
 - Are surgery records kept & available for review?
 - Anesthetic agents (in date, pharmaceutical grade, records)?
 - Anesthetic machine (on maintenance program, how is waste gas scavenged, F/Air canisters weighed, high pressure tanks secured)

Likely Questions



- Controlled substances
 - Secured
 - Logs of usage, running balance
- Non-pharmaceutical grade agents
 - Justified and approved in protocol
 - Prepared properly

Likely Questions

- What do you do if you notice a sick animal?
- Do you know how to contact your veterinary technicians and veterinarians?
- Do you have current emergency contact information available in the animal room so that you can be contacted 24/7?

Likely Questions



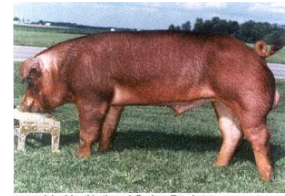
- **Humane endpoints**

- What are they?
- Are they indicated in the approved protocol?
- Are animals monitored and euthanized according to protocol?

Likely Questions

- Euthanasia
 - How are animals euthanatized?
 - Guillotine - how often is it sharpened?
 - CO₂ - how do you ensure death?
 - How is CO₂ administered? How is a set flow rate ensured? Has the rate been calculated using the chamber dimensions?
 - How are animal carcasses disposed?

Likely Questions



provided by National Swine Registry

- What is the maximum length of time an animal stays in the lab?
- Is anyone in the lab allergic to animals?
- What does one do if they believe they have an animal allergy?
- Is everyone in the lab who comes in contact with animals enrolled in the occupational health program?

Likely Questions



- Animal Transport
 - How are animals transported to the lab?
 - Are animals transported through common corridors/elevators?
 - Are cages covered?
 - Are private vehicles used? If so, have you read and do you abide by the IACUC Animal Transport Policy?

Likely Questions



- **Animal Concerns**

- If one had an animal use concern, how would it be reported and to whom?
- Is there an anonymous method of reporting concerns?
- Does the university have whistleblower protection for people who report animal concerns?
- <http://research.unc.edu/iacuc/policies-procedures/reporting-animal-welfare-concerns-or-noncompliance/>

Likely Questions



Satellite Facilities (PI-maintained housing)

- Is the use of a satellite justified?
- Are animals observed and provided husbandry care daily?
- Are husbandry records kept/available for review?
- Are DLAM veterinarians contacted if animals exhibit sickness or disease?
- Are DLAM vets notified before receiving animal shipments?
- Are SOPs in place for cleaning facility/equipment?
- Is there a disaster plan on file and have caretakers read it?

Likely Questions

Only address questions about issues for which you are responsible!

- It's ok to say:
 - “I'm not the person who performs that surgery, procedure, euthanasia, monitoring....etc.”
 - “I don't know the answer to that, but I'll get back to you before the visit is over.”

At the end.....

- Exit briefing
- Site visitors' assessment
 - Suggestions for improvement
 - Mandatory items
- Institutional written response within 10 business days
- Council deliberation

Outcomes

- Continued full accreditation
- Conditional accreditation
- Deferred accreditation
- Probation
- Revoke